

---

Annex

Description

## Fast browsin

1	6-deoxy-hexose
2	Heptose
3	Hexose
4	Hexosamine
5	Pentose

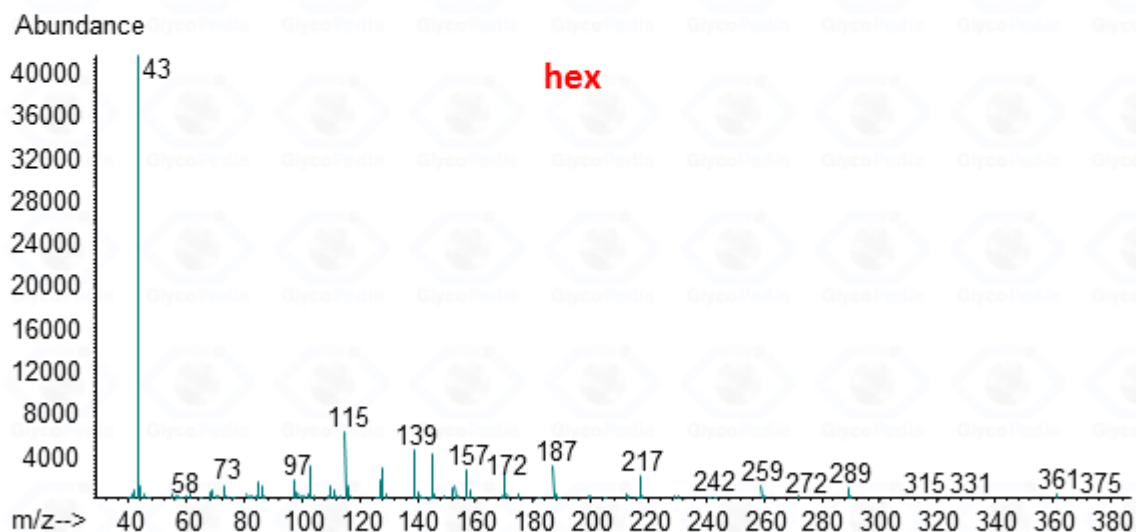
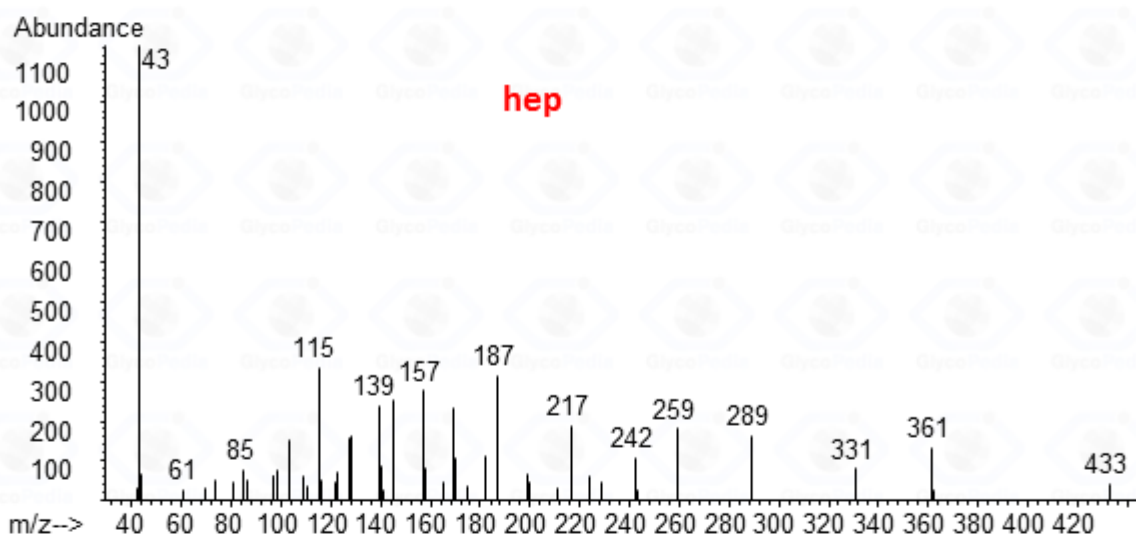
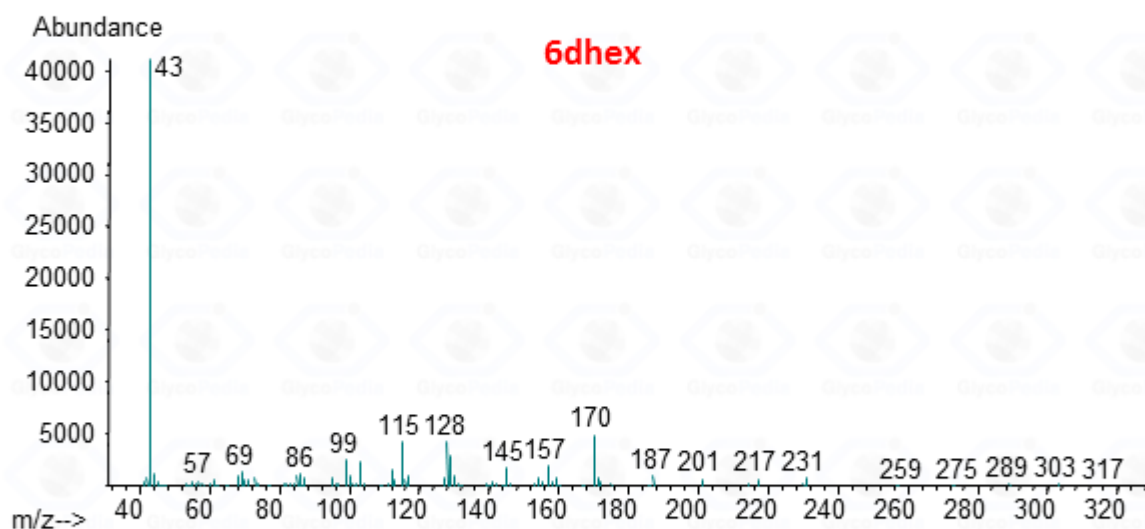
	<b>Ace</b>
6	2-acetamido-2,6-dideoxy-hexose
7	3-acetamido-3,6-dideoxy-hexose
8	4-acetamido-4,6-dideoxy-hexose
9	4-acetamido-4-deoxy-pentose
10	3-deoxy-2-keto-D- <i>manno</i> -ulosonic acid
11	6-deoxy-hexose
12	heptose
13	Hexose
14	Hexosamine
15	Hexosaminuronic acid
16	Hexuronic Acid
17	Hexuronic Acid (lactone)
18	5,7-diacetamido-3,5,7,9-tetra-deoxy-D-g (legionaminic acid)
19	Muramic Acid
20	Neuraminic Acid (or Sialic Acid)
21	Pentose



	<b>Partially Met</b>
	1,2,5-tri-O-acetyl-3,4-di-O-methyl-pent
	1,3,5-tri-O-acetyl-2,4-di-O-methyl-pent
	1,4,5-tri-O-acetyl-2,3-di-O-methyl-pent
	1,4-di-O-acetyl-2,3,4-tri-O-methyl-pent
	1,5-di-O-acetyl-2,3,4-tri-O-methyl-pent
	1,2,4,5-tetra-O-acetyl-3-O-methyl-pent
	1,3,4,5-tetra-O-acetyl-2-O-methyl-pent
	1,2,5-tri-O-acetyl-3,4-di-O-methyl-6de
	1,3,5-tri-O-acetyl-2,4-di-O-methyl-6de
	1,4,5-tri-O-acetyl-2,3-di-O-methyl-6de
	1,4-diO-acetyl-2,3,4-tri-O-methyl-6deo
	1,5-di-O-acetyl-2,3,4-tri-O-methyl-6de
	1,2,3,5-tetra-O-acetyl-4-O-methyl-6deo
	1,2,4,5-tetra-O-acetyl-3-O-methyl-6deo
	1,3,4,5-tetra-O-acetyl-2-O-methyl-6deo
	1,2,5-tri-O-acetyl-3,4,6-tri-O-methyl-he
	1,3,5-tri-O-acetyl-2,4,6-tri-O-methyl-he

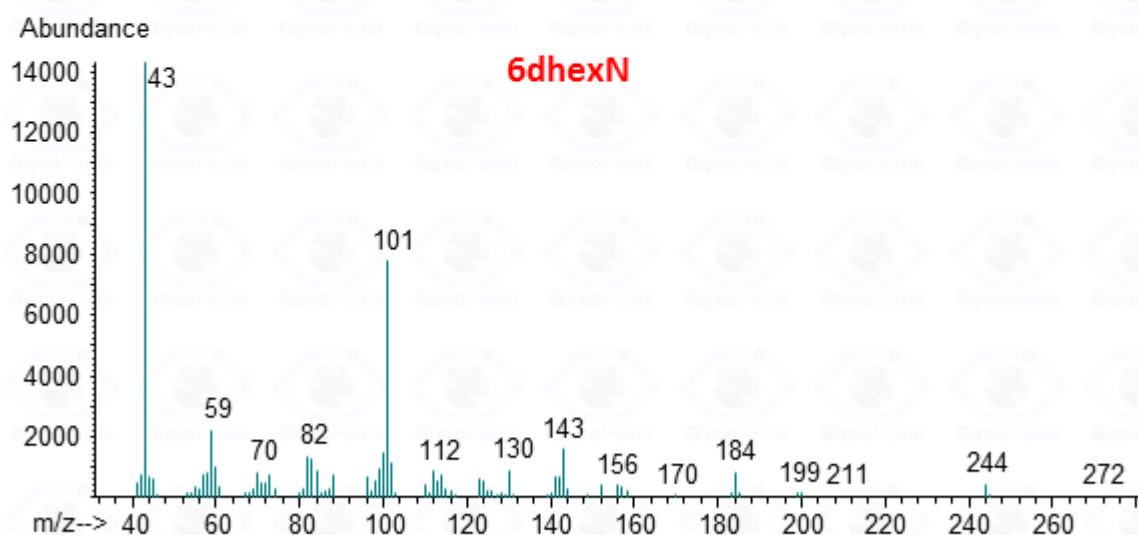
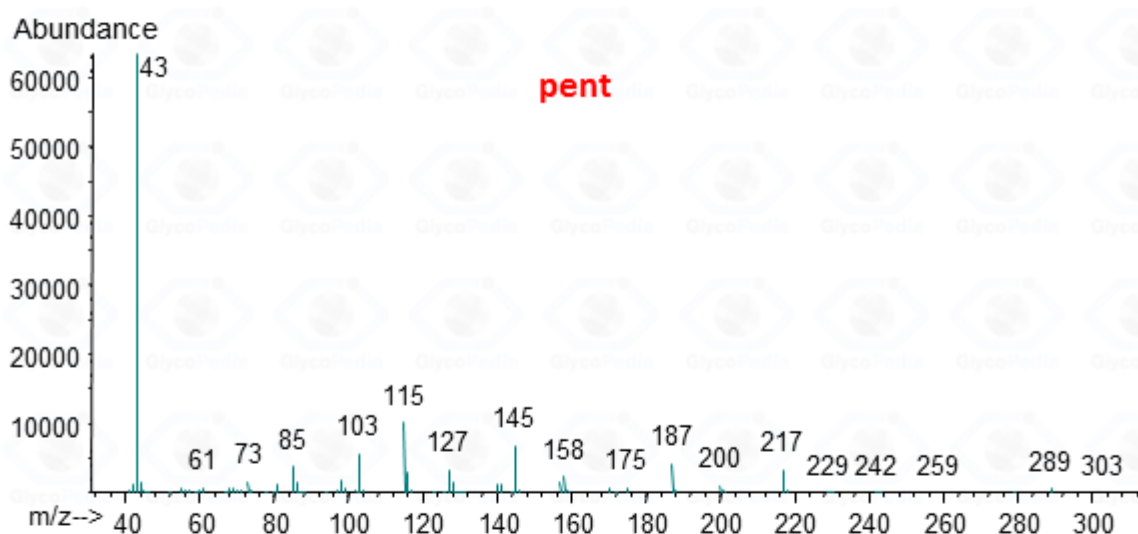
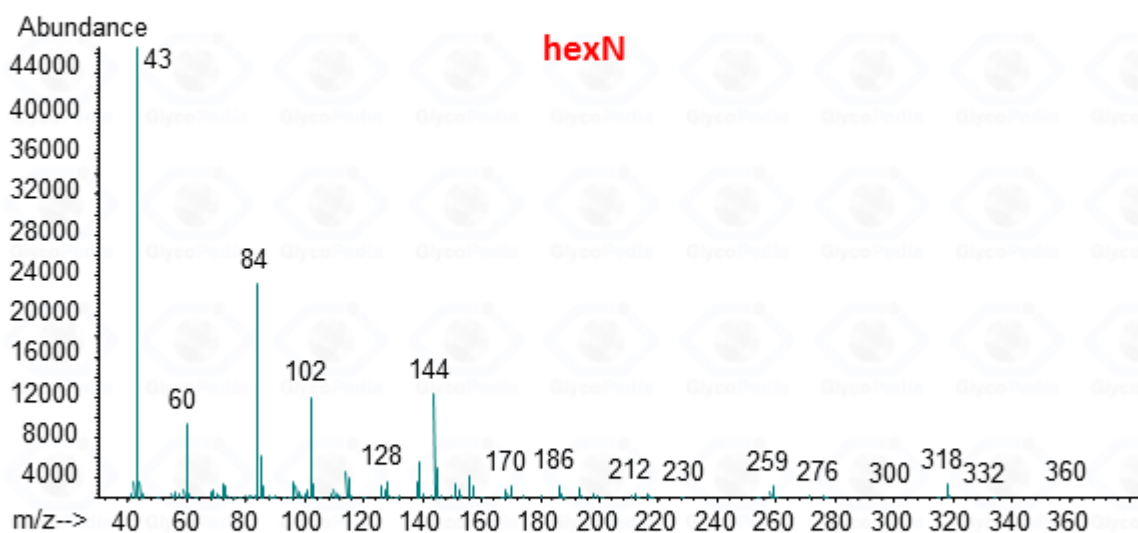


## Acetylated Alditols





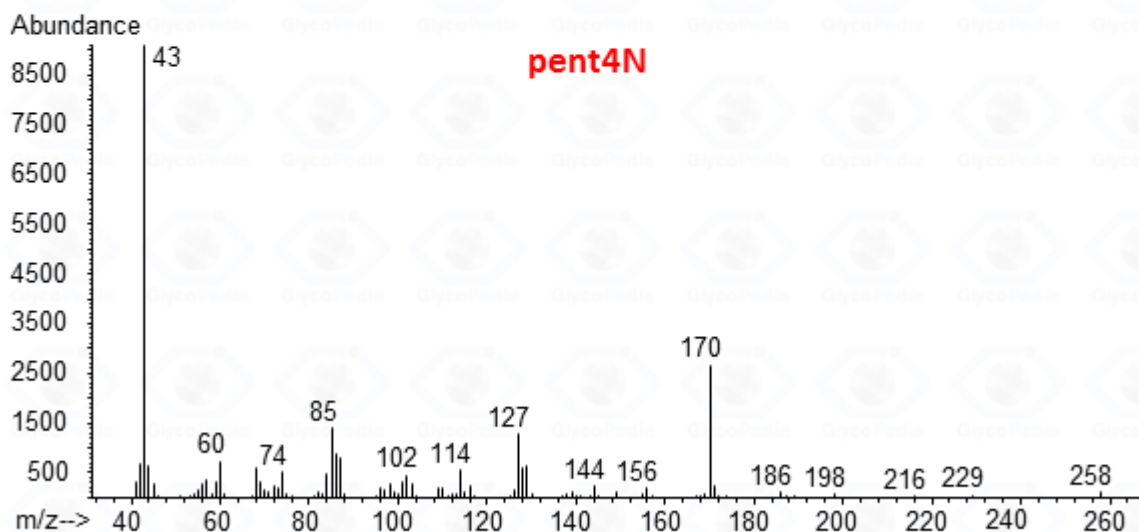
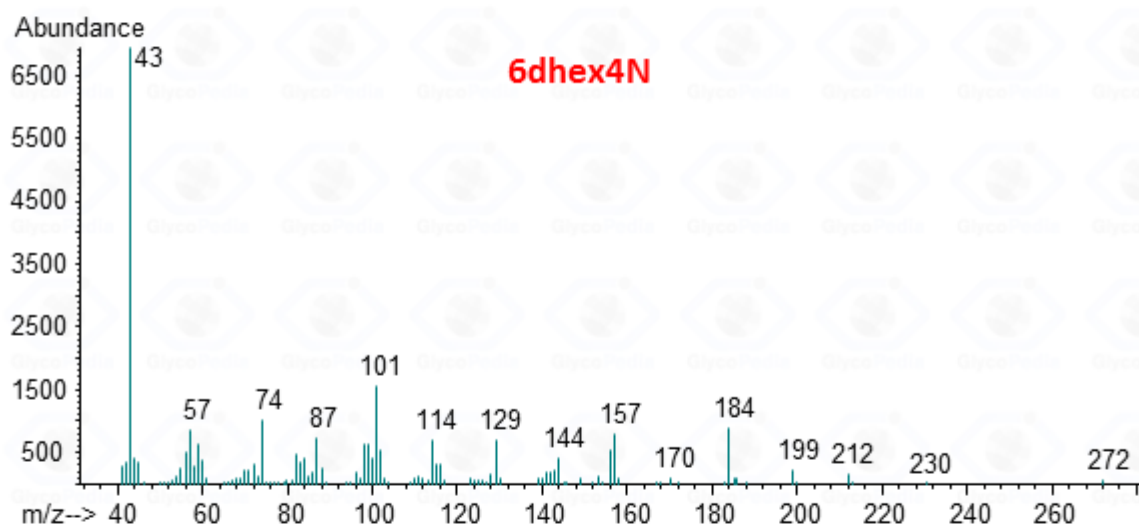
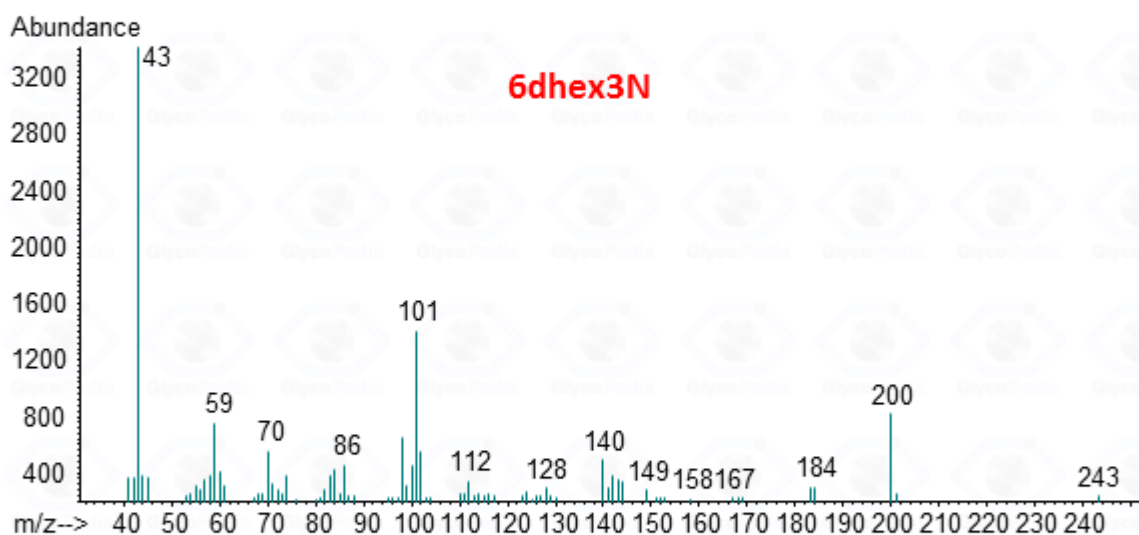
## Acetylated Alditols





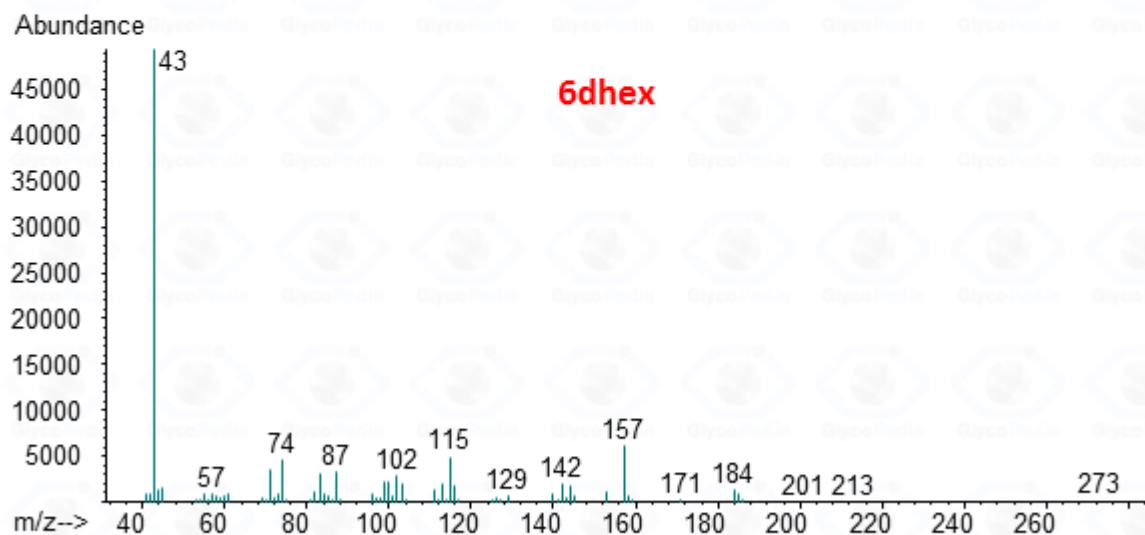
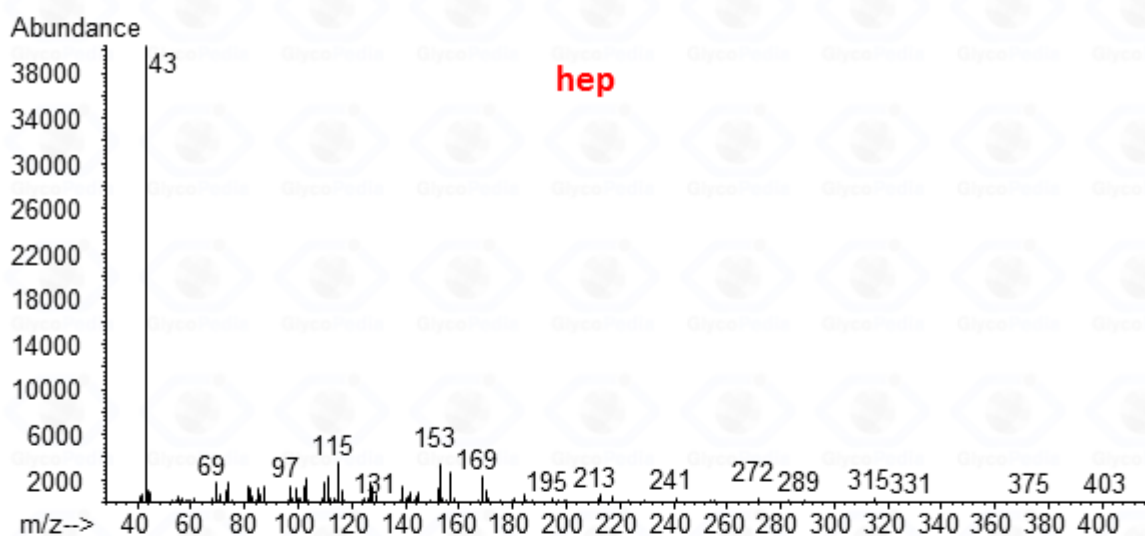
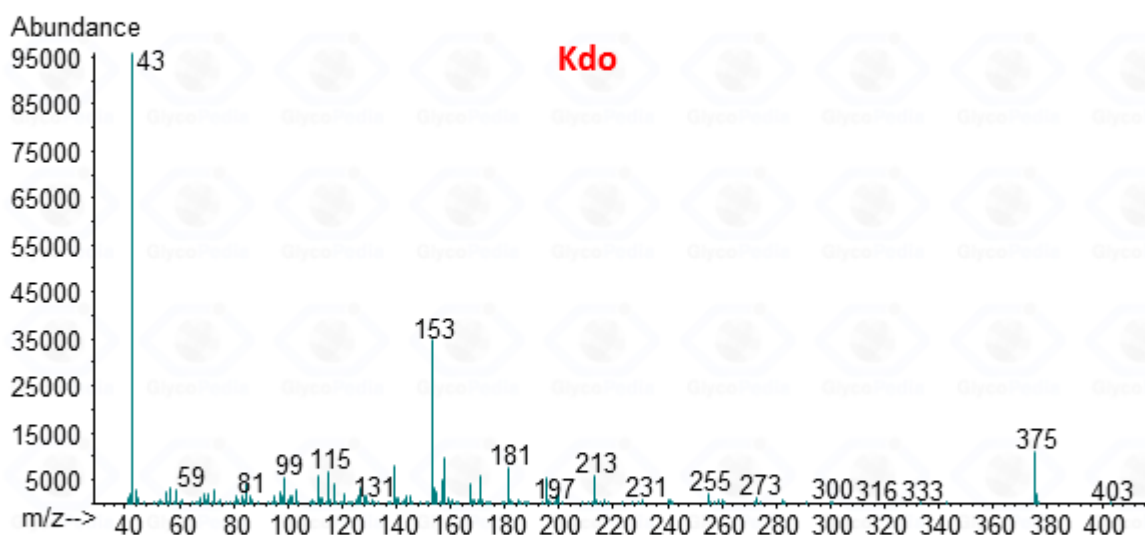


## Acetylated MethylGlycoside



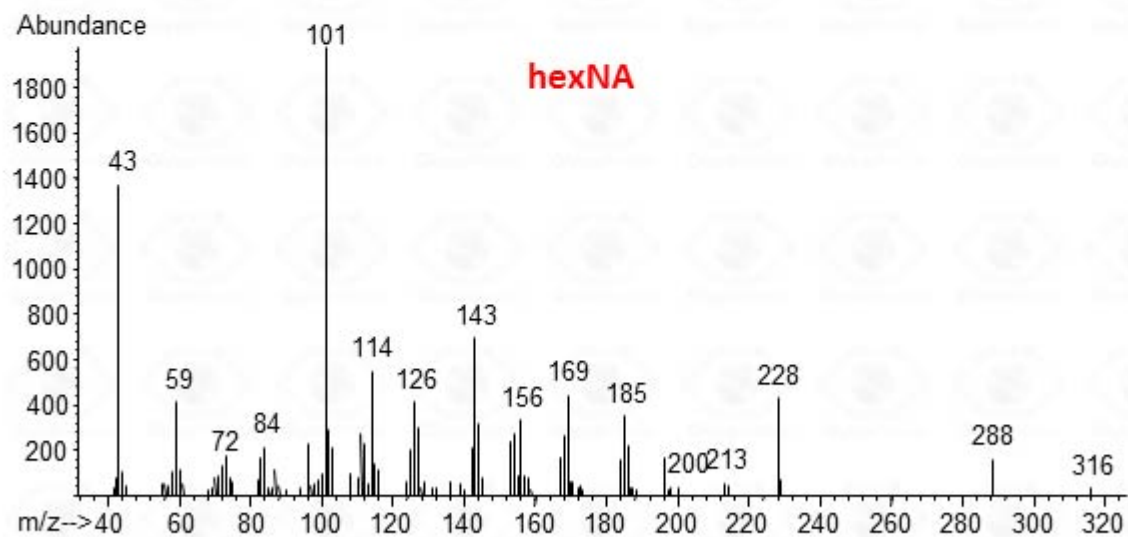
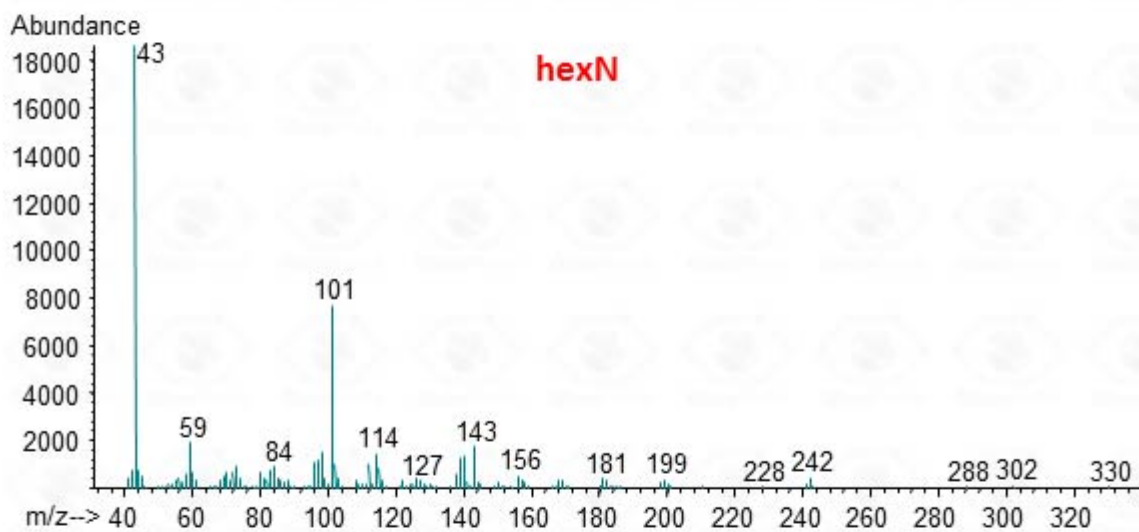
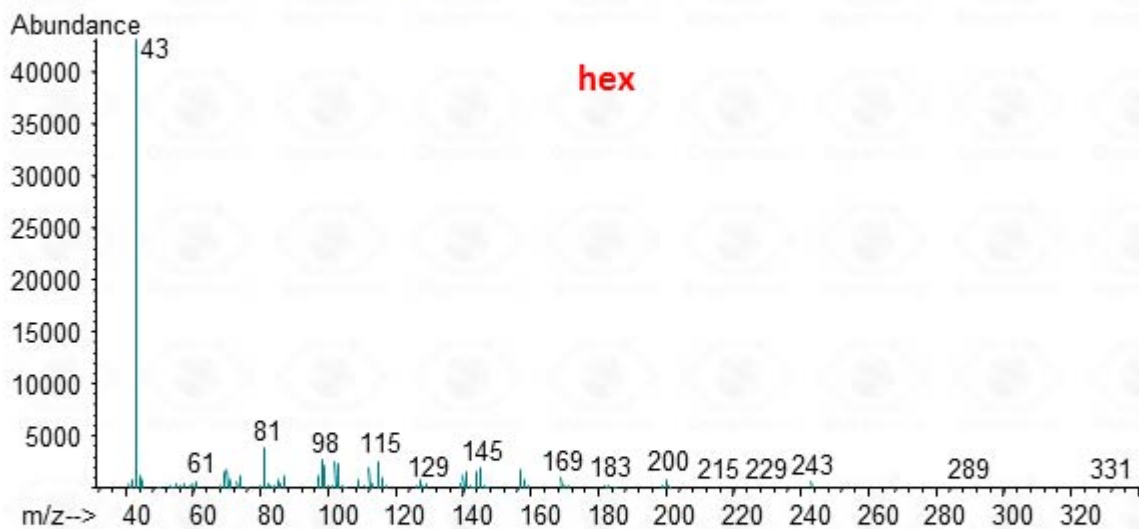


## Acetylated MethylGlycoside



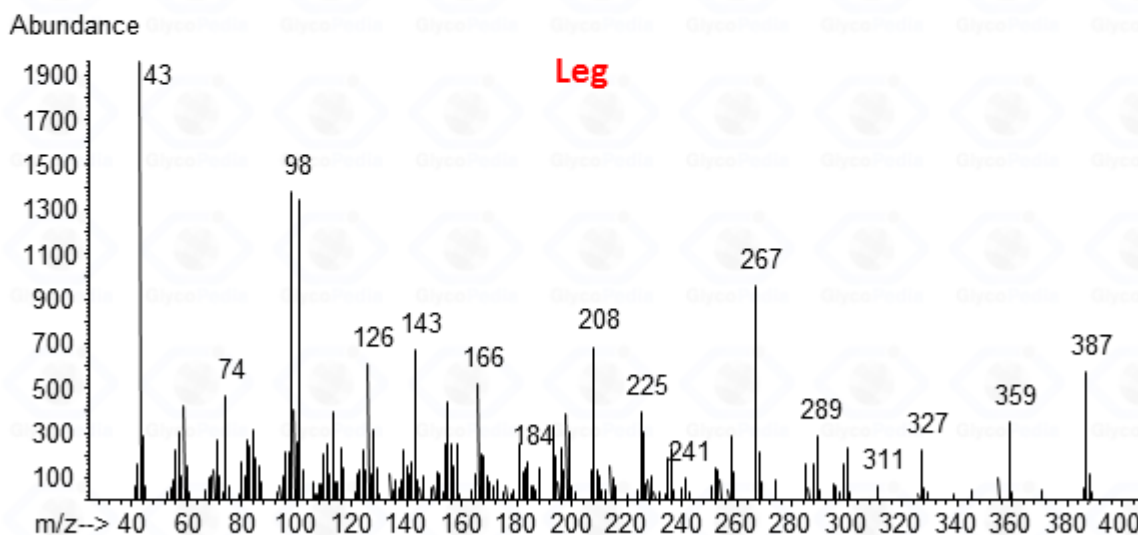
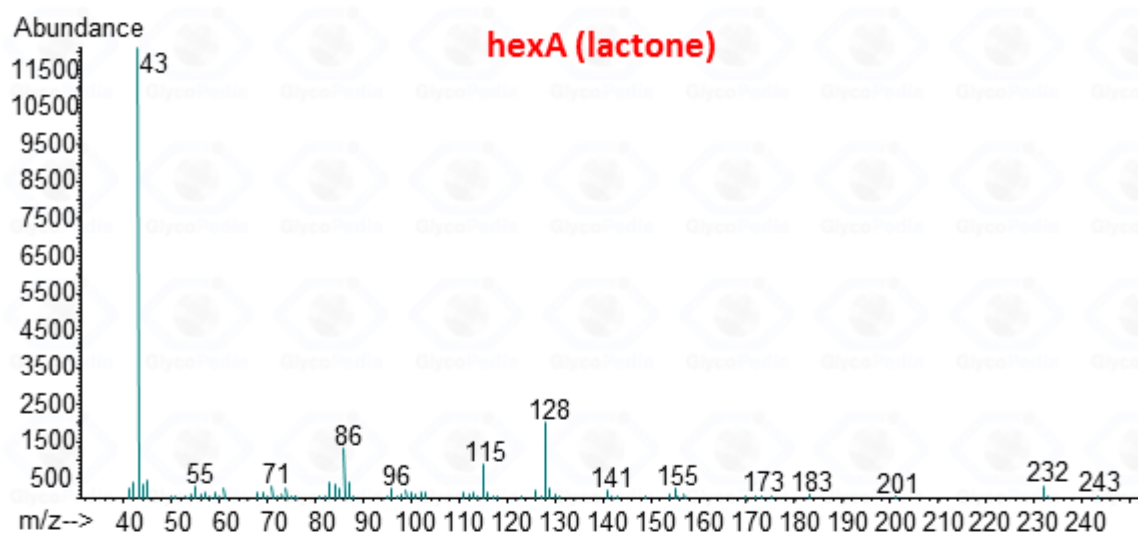
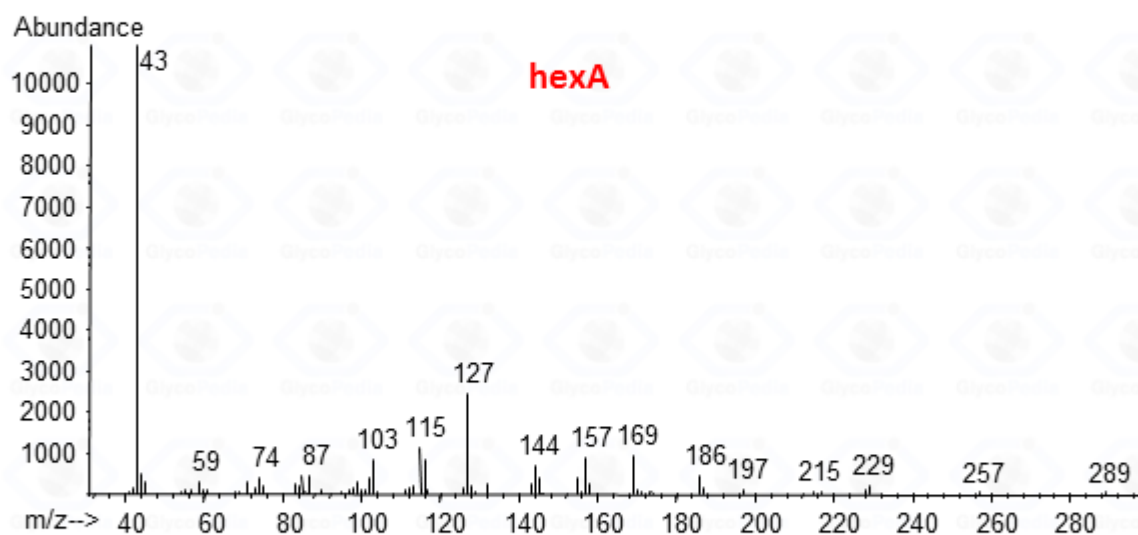


## Acetylated MethylGlycoside





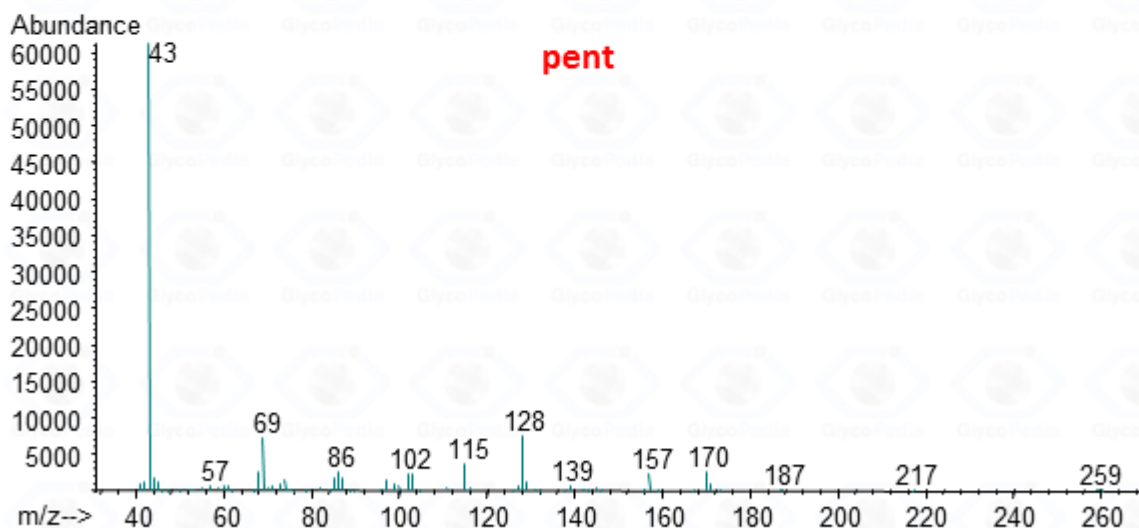
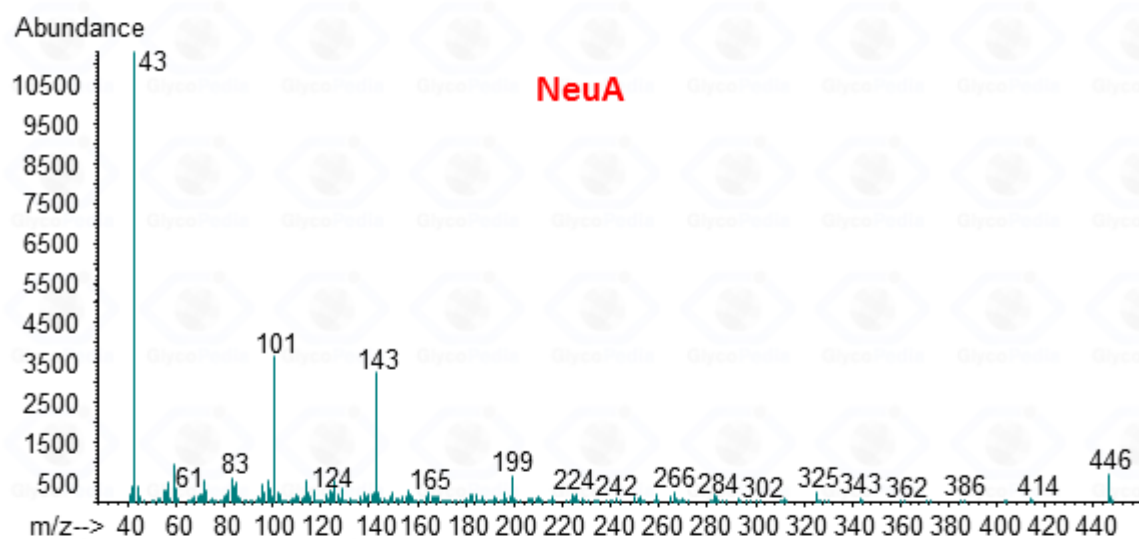
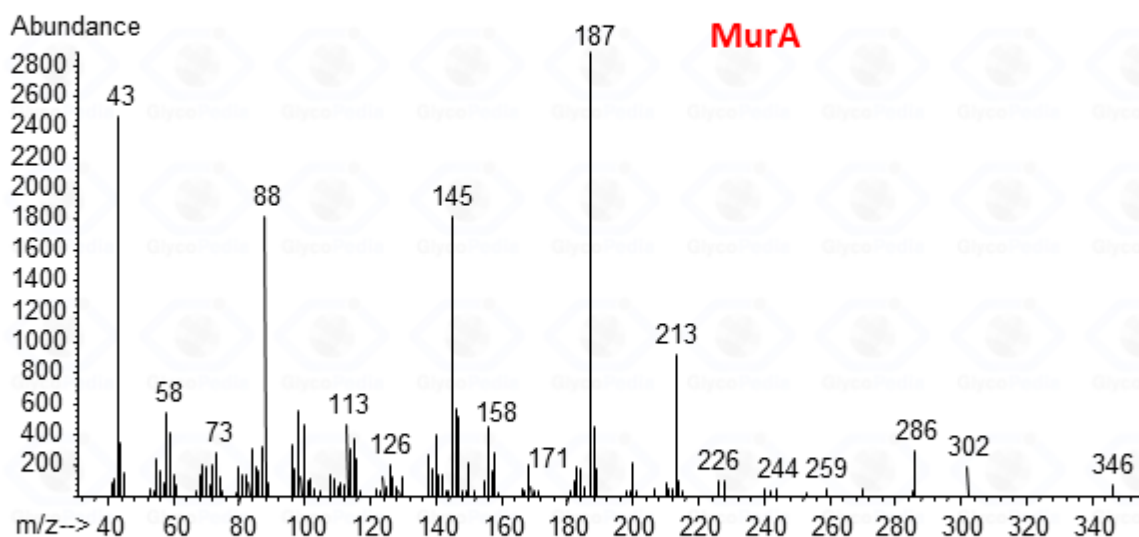
## Acetylated MethylGlycoside





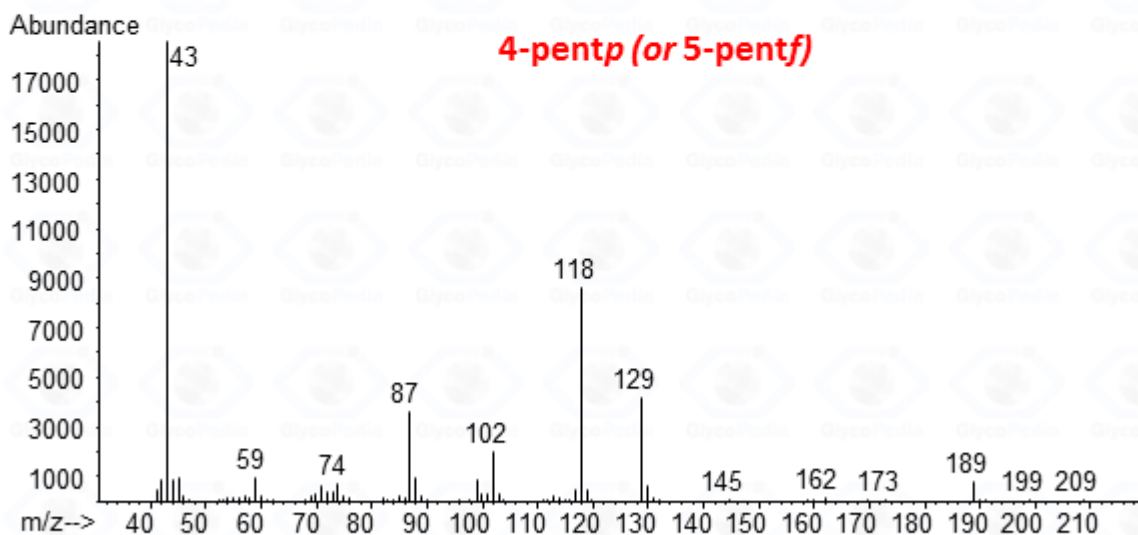
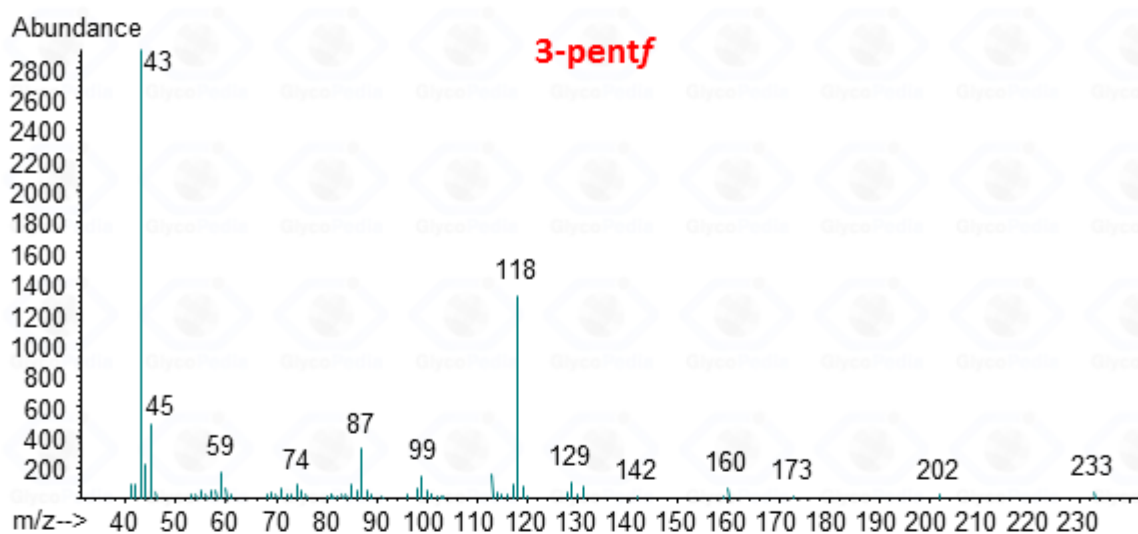
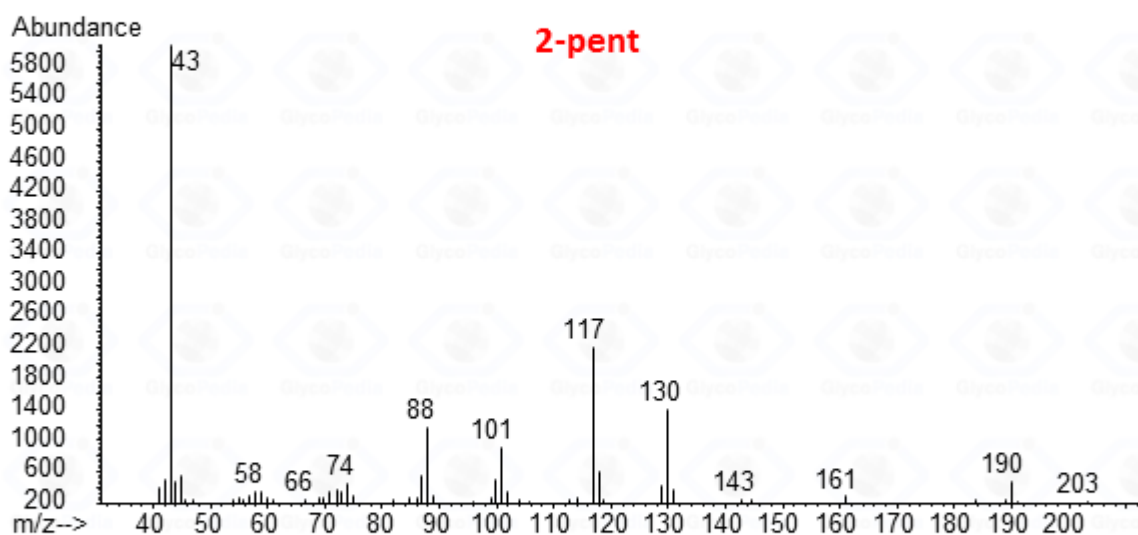


## Acetylated MethylGlycoside



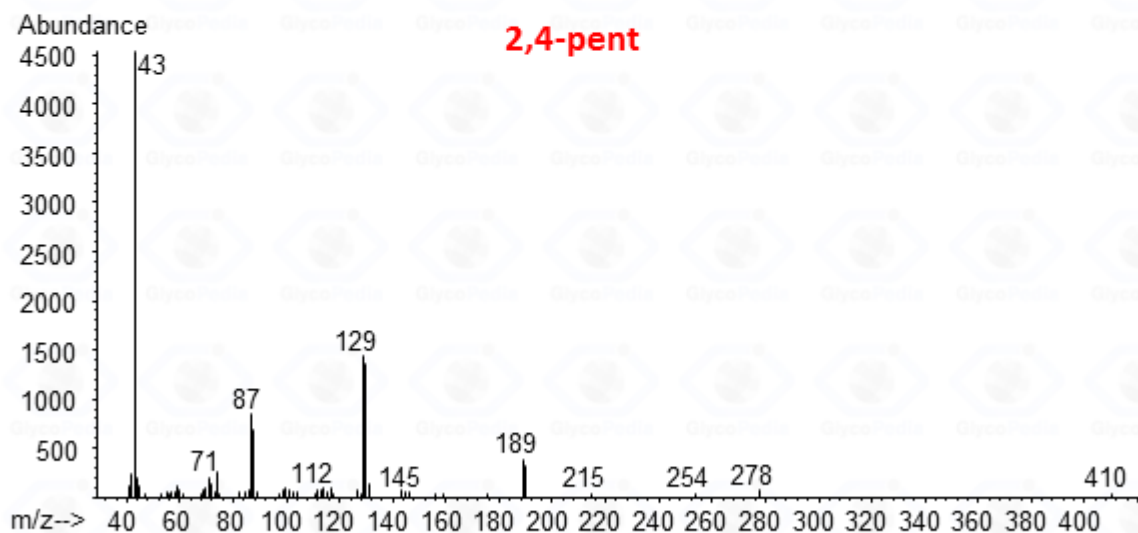
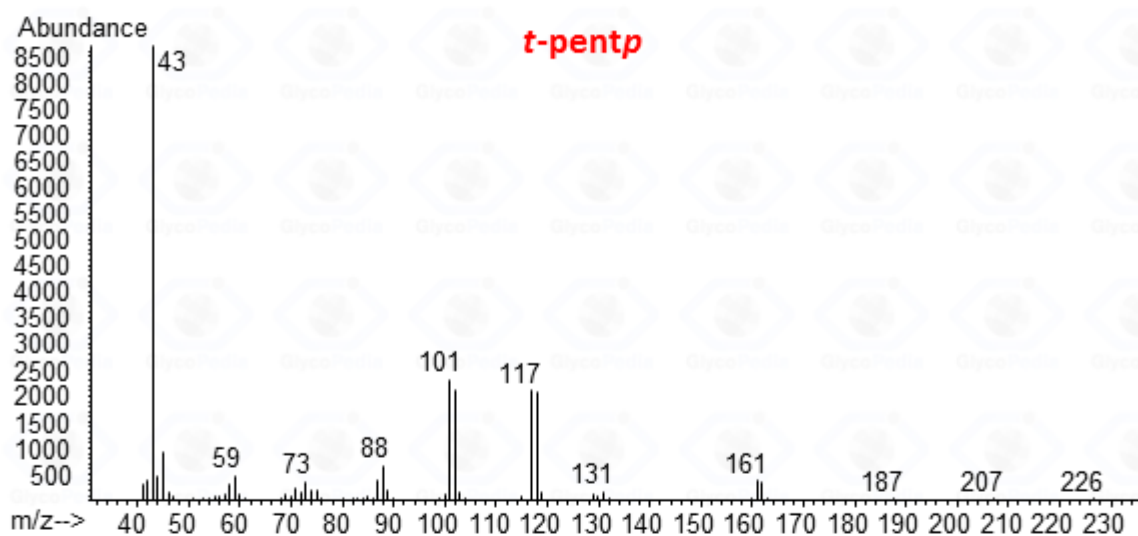
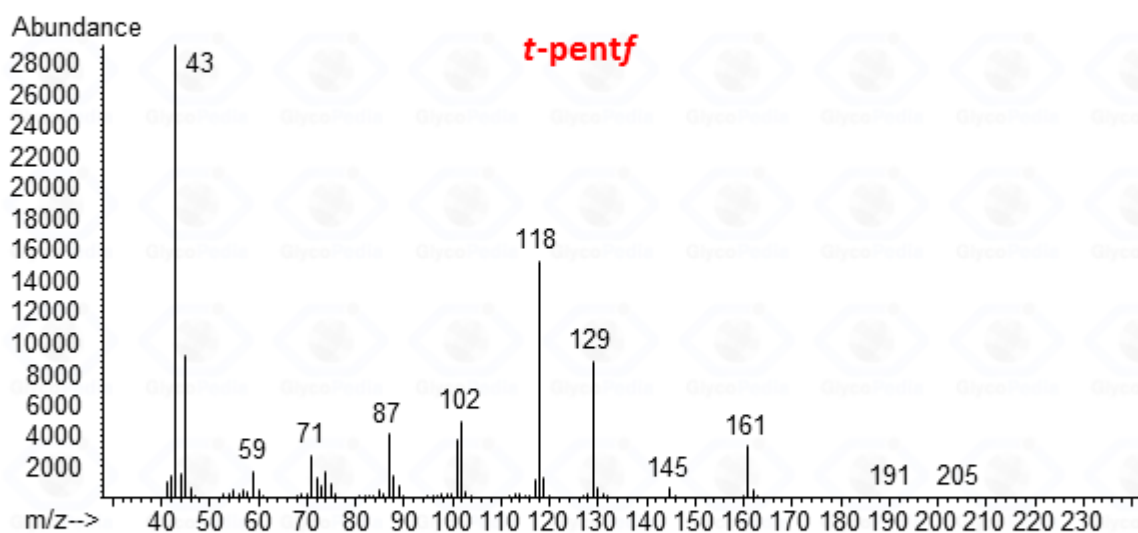


## Partially Methylated and Acetylated Alditols



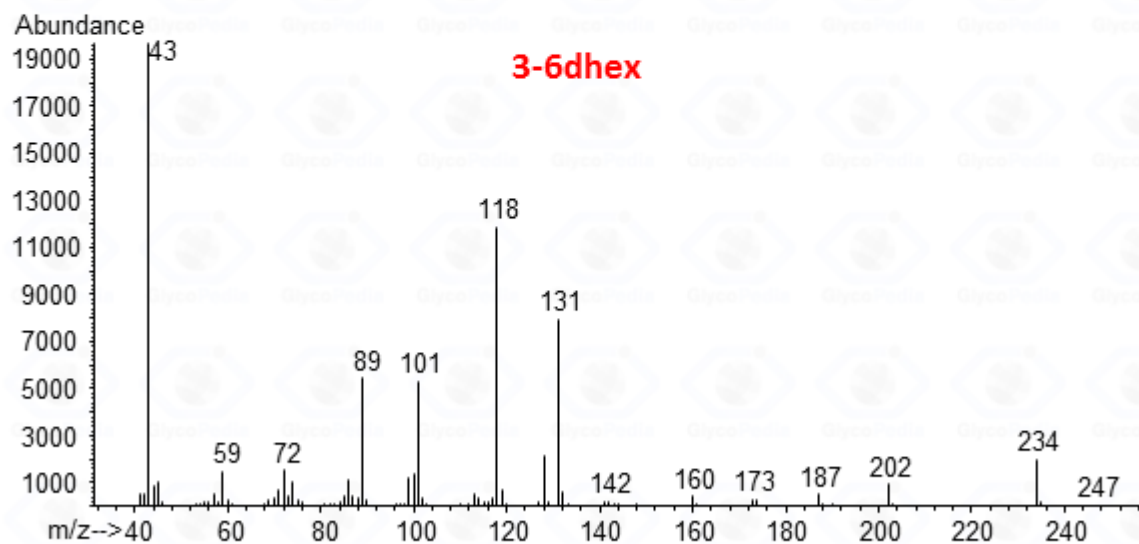
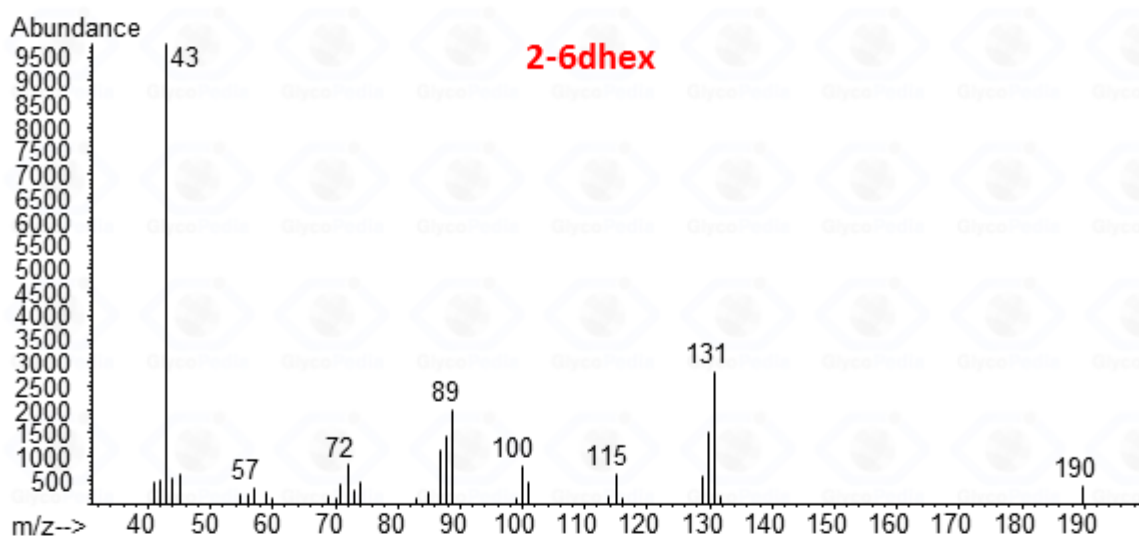
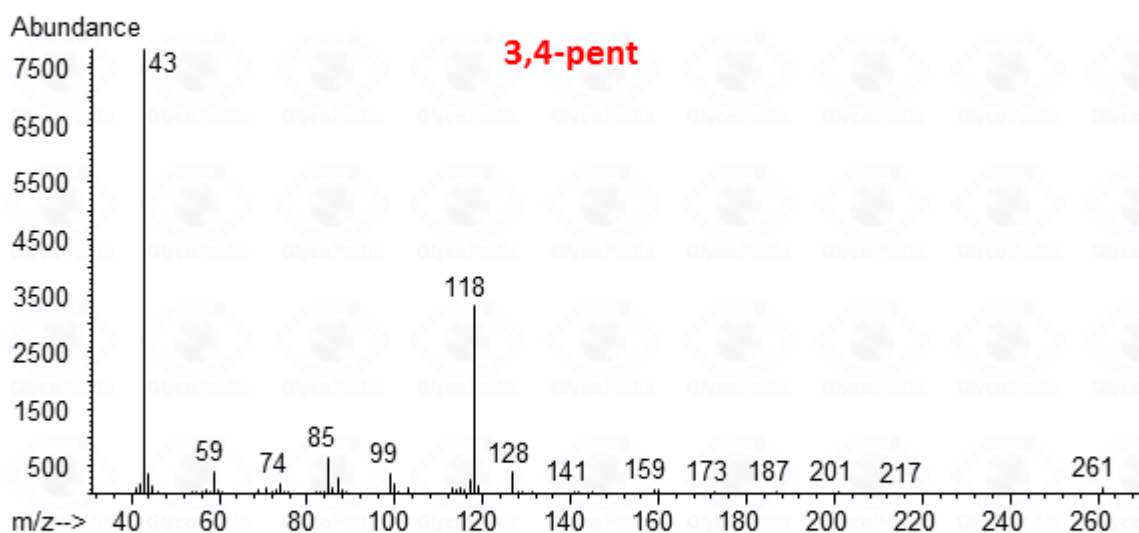


## Partially Methylated and Acetylated Alditols





## Partially Methylated and Acetylated Alditols







## Partially Methylated and Acetylated Alditols

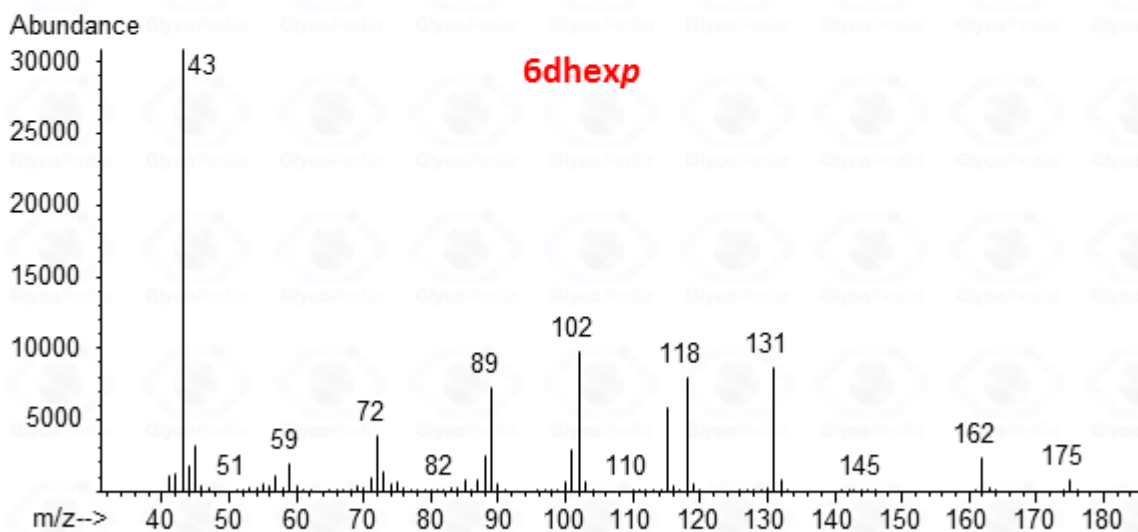
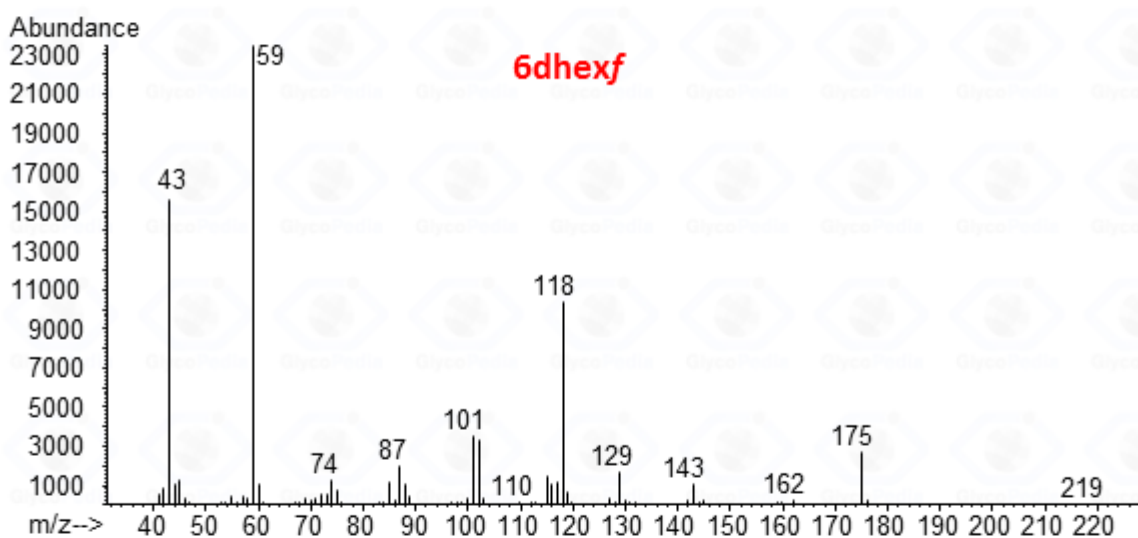
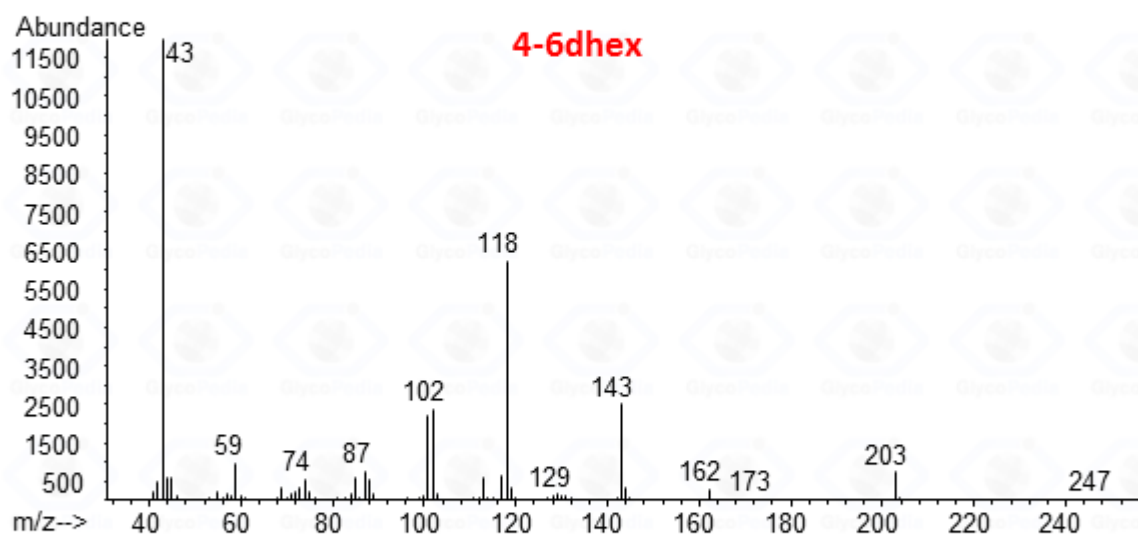
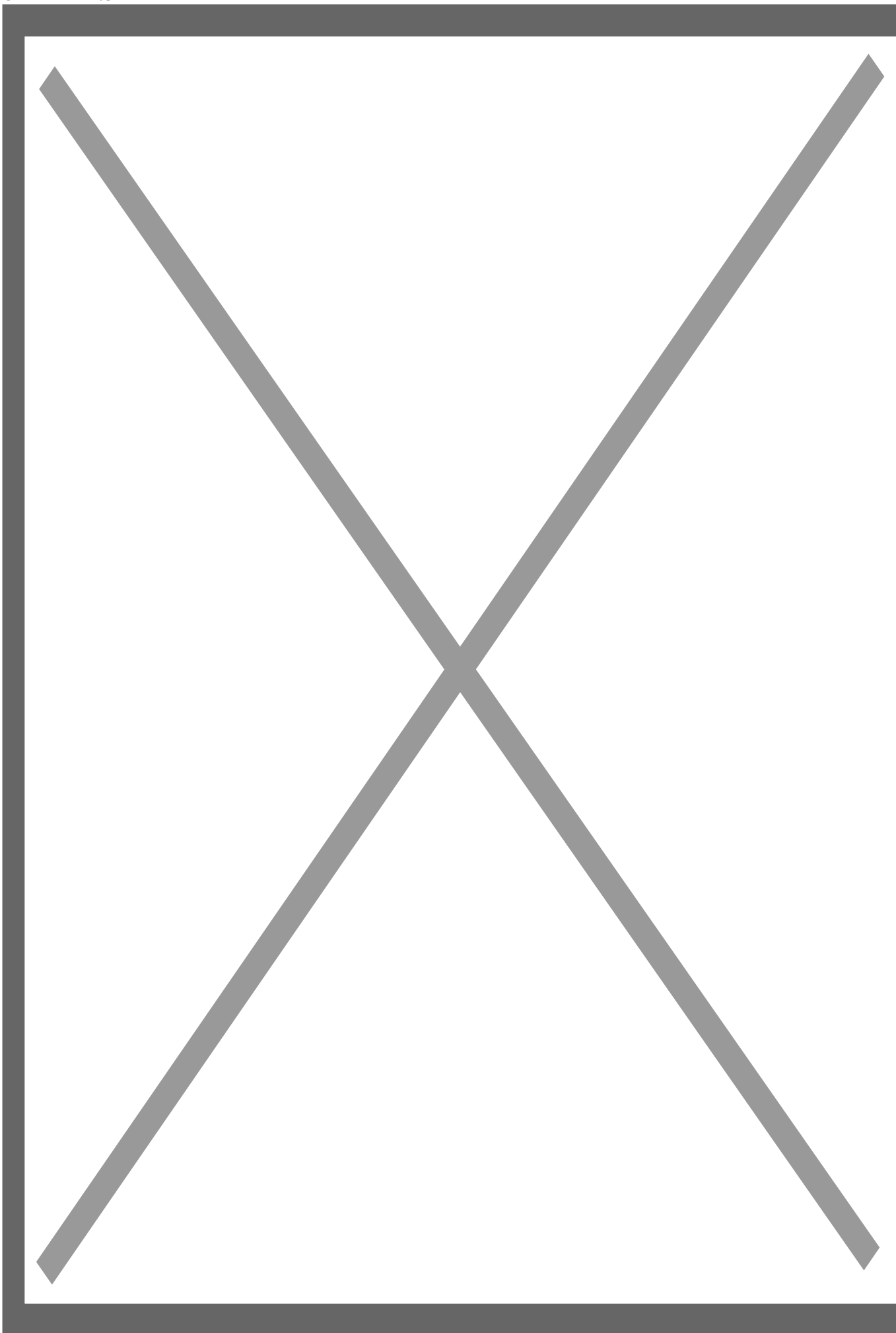




Image not found or type unknown





## Partially Methylated and Acetylated Alditols

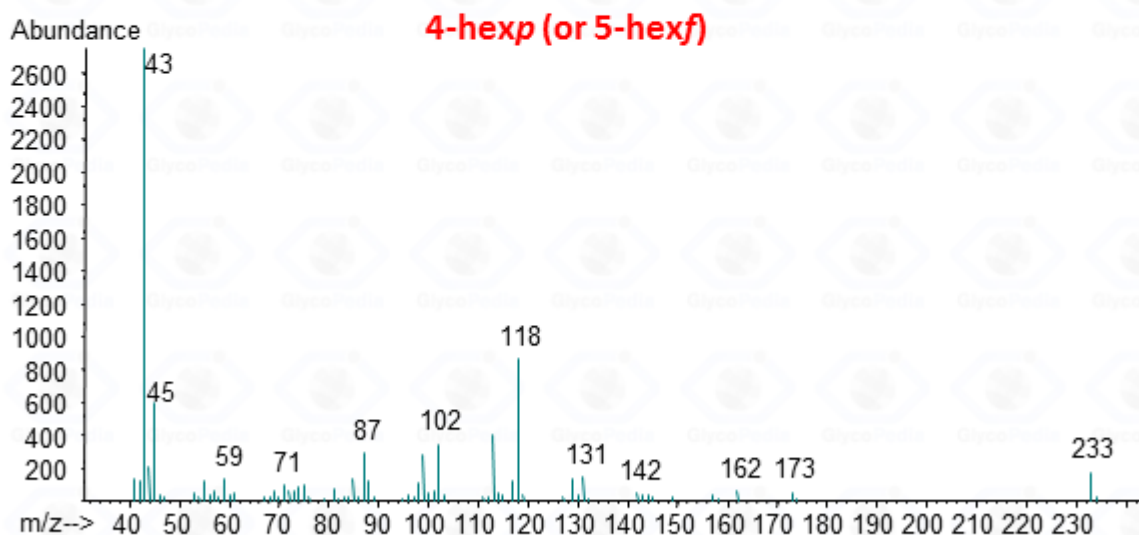
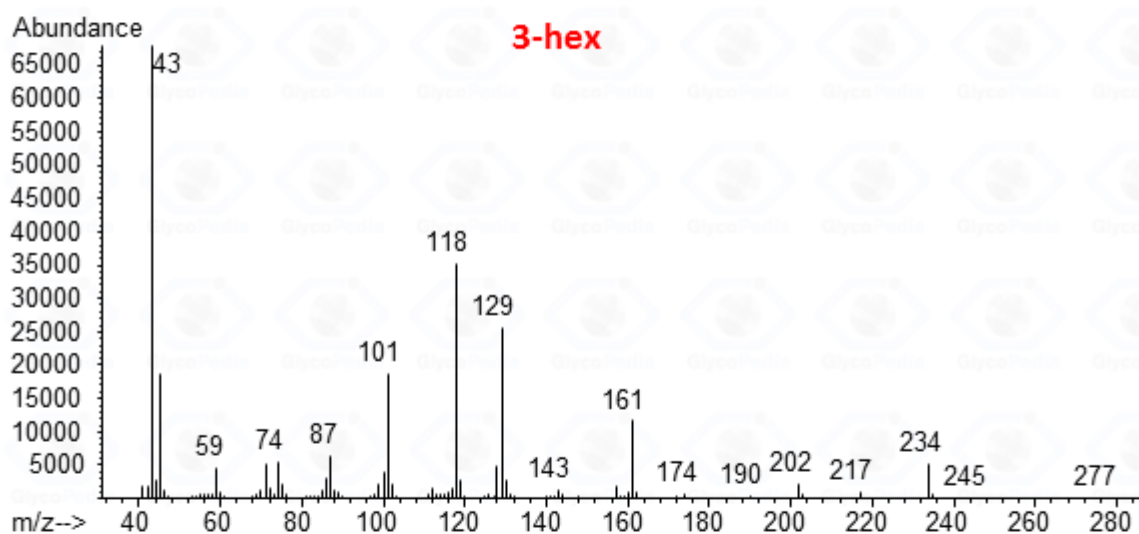
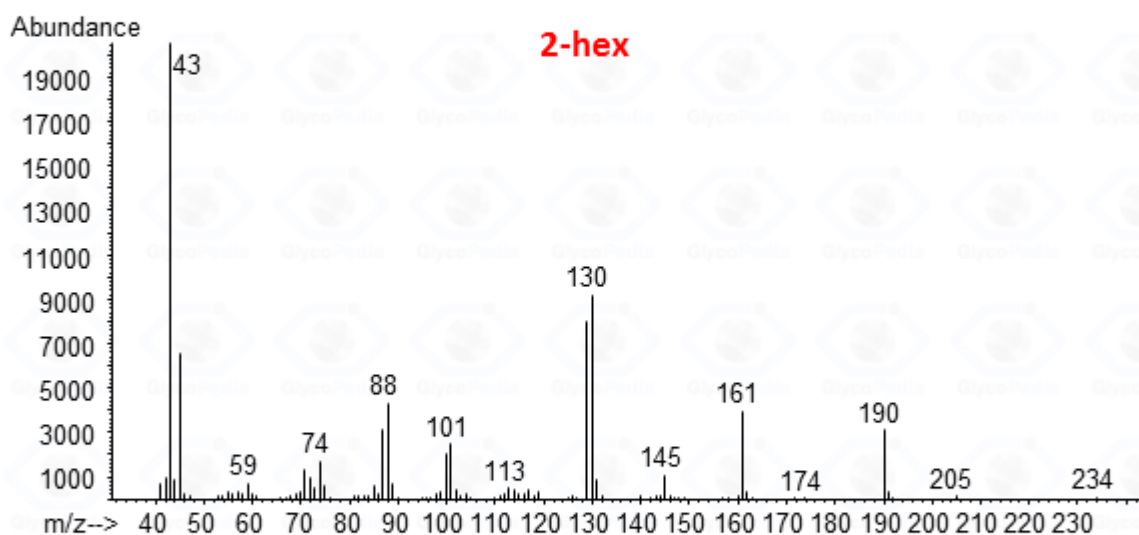




Image not found or type unknown

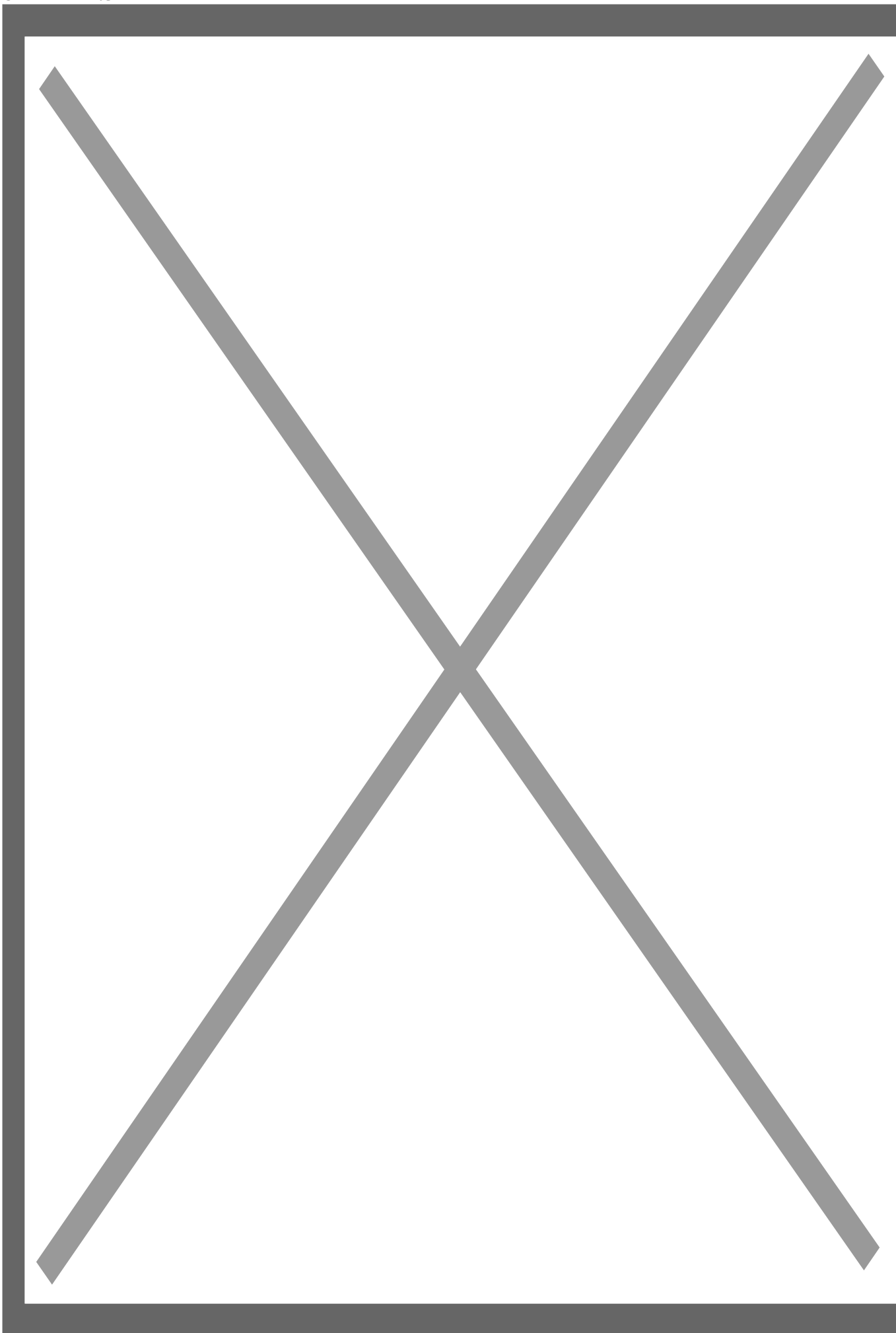






Image not found or type unknown

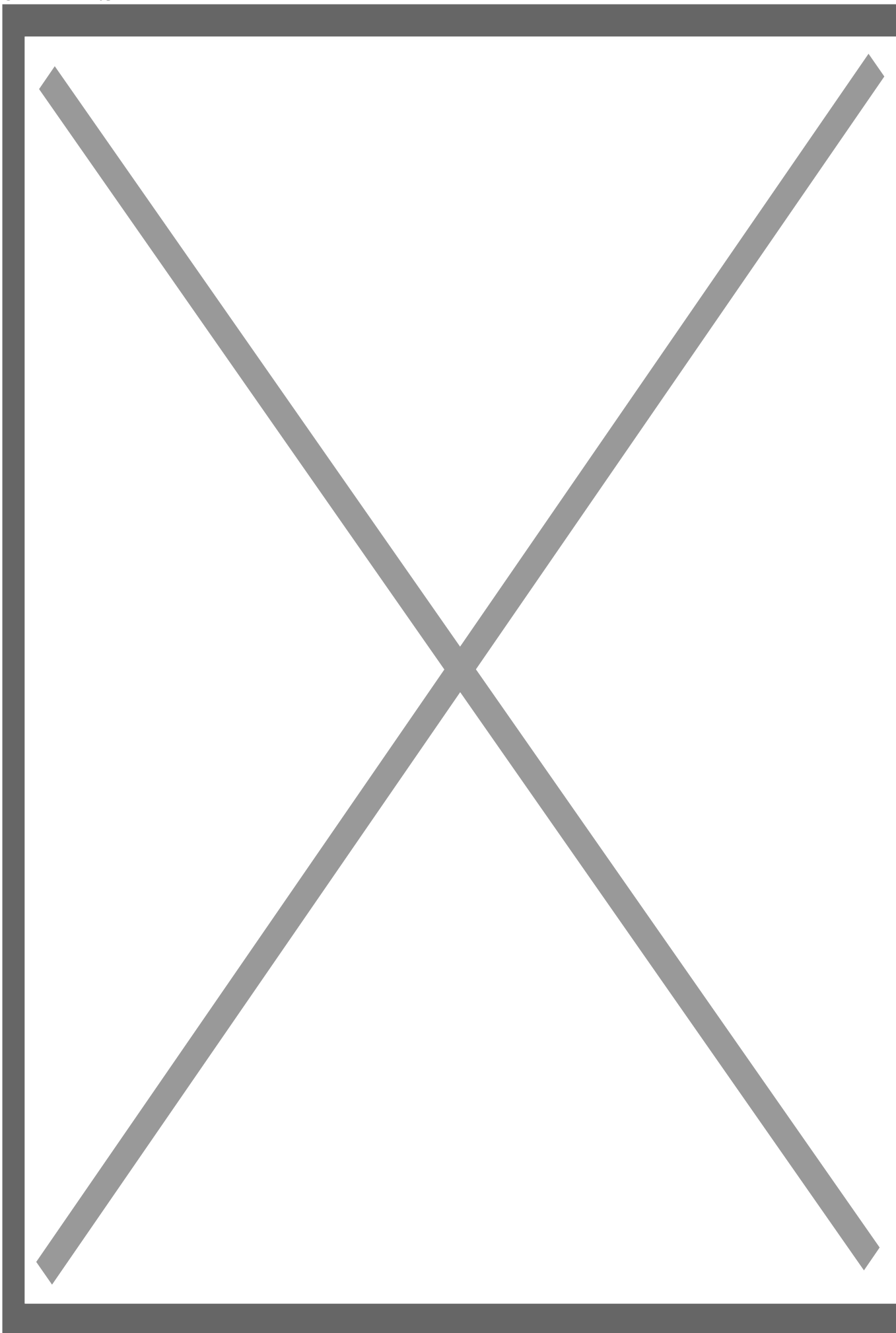




Image not found or type unknown

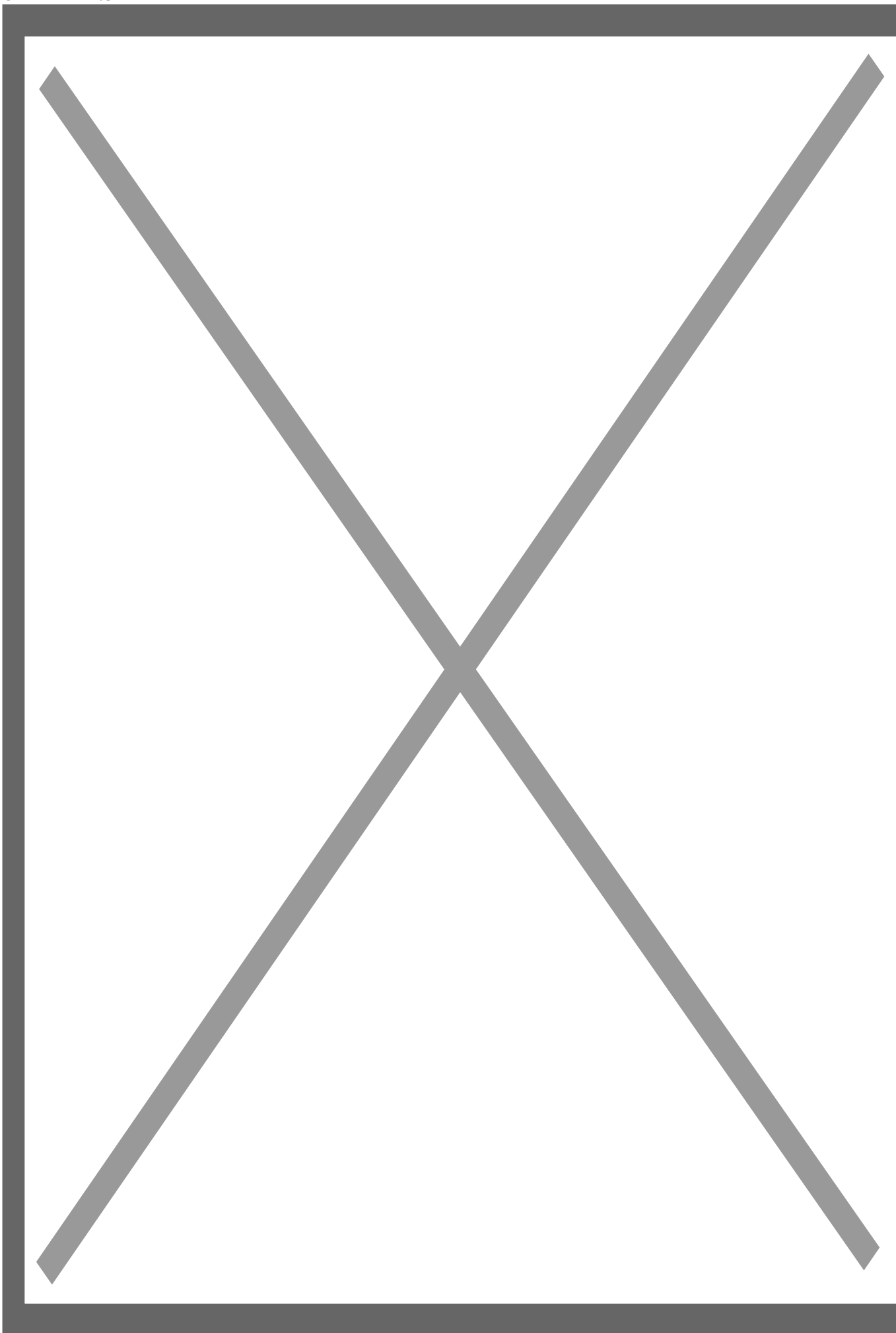




Image not found or type unknown

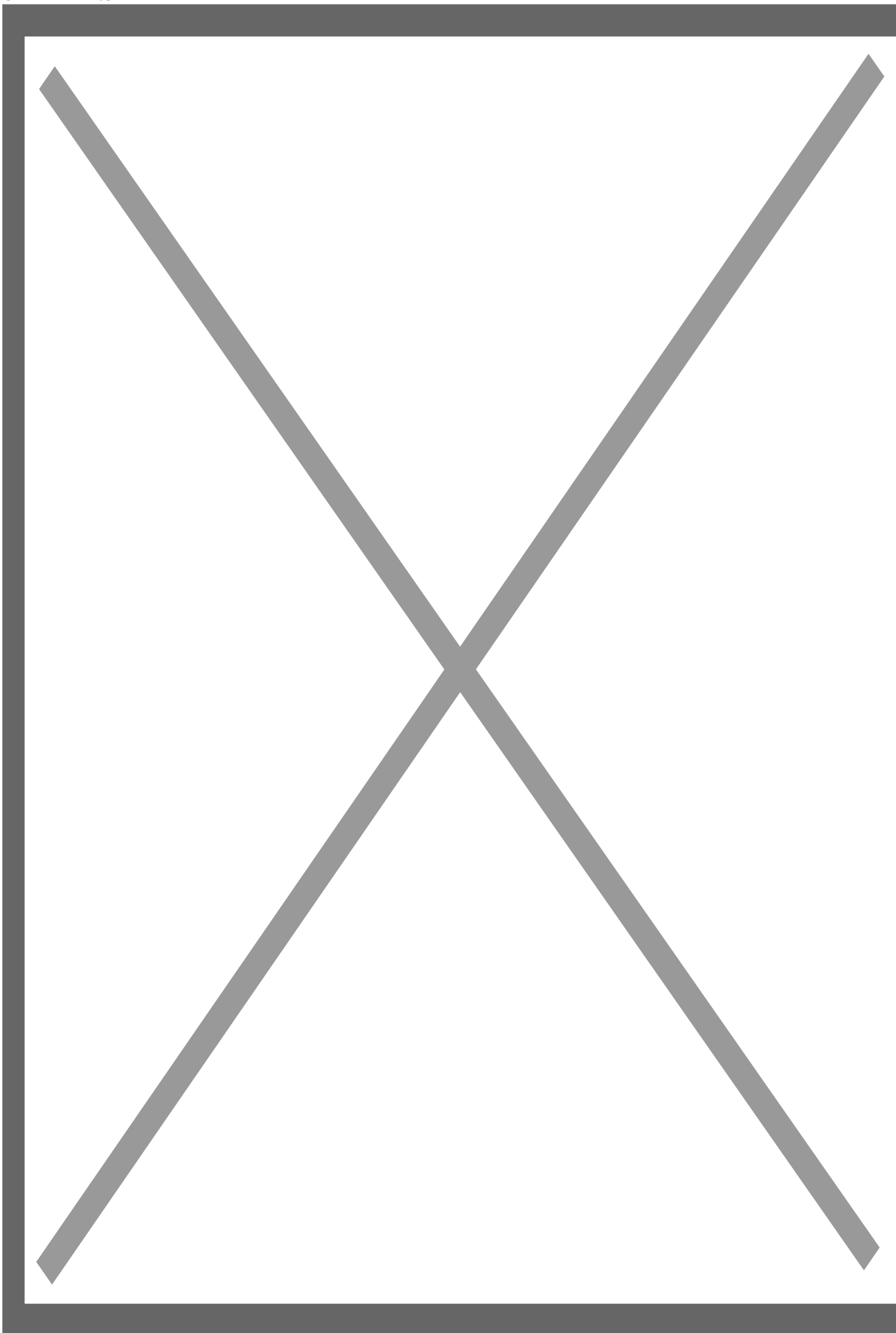




Image not found or type unknown

