

E-chapters

Description

E-chapters

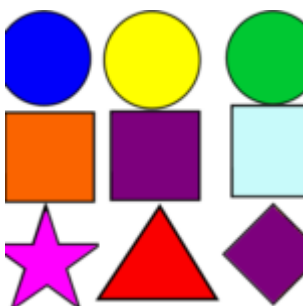


[The fascinating world of Siglec Proteins : A primer](#)

Benedetta Girardi & Serge Perez



[Popular Glycoscience : Starch as a Marker and Determinant of Human Evolution](#)



[Symbolic Representation of Monosaccharides in the Age of Glycobiology](#)

Serge Perez

[Measuring Carbohydrate-Lectin Interactions: A Guide for Beginners](#)

Margherita Duca



[Case study of Glycomimetics against Multi-Drug Resistant Pathogens](#)

Rafael Bermeo



[An Overview of Human Innate Immunity](#)

Ieva Sutkeviciute - Franck Fieschi

[Human Immunodeficiency Virus : the Infection via Sexual Transmission](#)

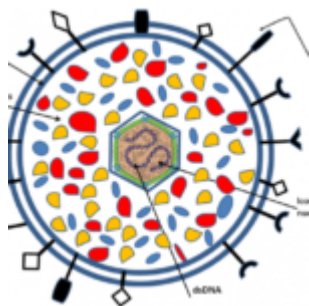
Ieva Sutkeviciute - Franck Fieschi

[NMR for Structural Glycoscience. Part I – The Nuclear Overhauser Effect](#)

Juan-Carlos Munoz-Garcia, Jesus Angulo Alvarez & Pedro Manuel Nieto Mesa

[NMR for Structural Glycoscience. Part II. Ligand Based NMR Spectroscopy for Binding Studies](#)

Juan-Carlos Munoz-Garcia, Jesus Angulo Alvarez & Pedro Manuel Nieto Mesa



[Herpesvirus-Induced Glycans](#)

Rickard Nordén

[Gas Chromatography - Mass Spectrometry for Glycosciences](#)

Cristina de Castro

[Bacterial Polysaccharides : Integrated use of Databases and Computational Tools for their Structural Investigations](#)

Ferran Nieto Fabregat, Roberta Marchetti & Serge Perez

[The Structure of Bacterial Cell Wall](#)

N. Jean, C. Bougault & J.P. Simorre

[The Plant Cell Walls](#)

Jean-Paul Joseleau & Serge Perez

[Blood Group ABO and its variants](#)

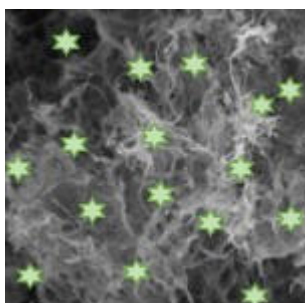
Lola Svensson, Serge Pérez & Stephen Henry

[Carbohydrate and Immunology on the Way to Modern Glycoscience. What can we learn from the past ?](#)

[Overview of Immune Responses : A Primer.](#)

[Anti-cancer Immunotherapy](#)

[Synthesis and Immunological Properties Tumor Associated Carbohydrate Antigens based Anticancer Vaccines](#)



[Nanocellulose based-material for wound dressing](#)



[A Traveler's Guide to Complex Carbohydrates in the Cyber Space](#)

[From Chitin to Chitosan](#)

[The Lignin Conundrum - Complex Plant Biomacromolecules with Obscure Traits](#)

[Mechanisms behind the Assembly and Stabilization of Hyaluronan-Rich Extracellular Matrices](#)

[In situ Physico-Chemical Characterization of Surface Confined Supramolecular Assemblies](#)



[45 Years at Work with Glyco](#)

[Sweet Art Logo](#)

Image not found or type unknown

[Sweet Art](#)