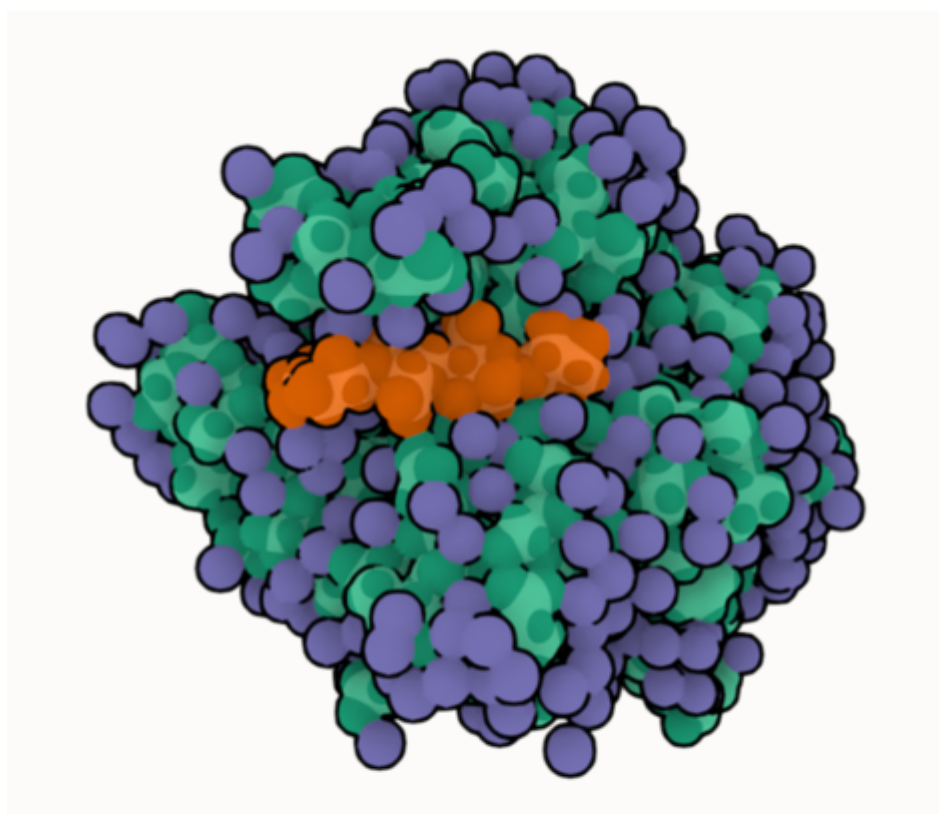


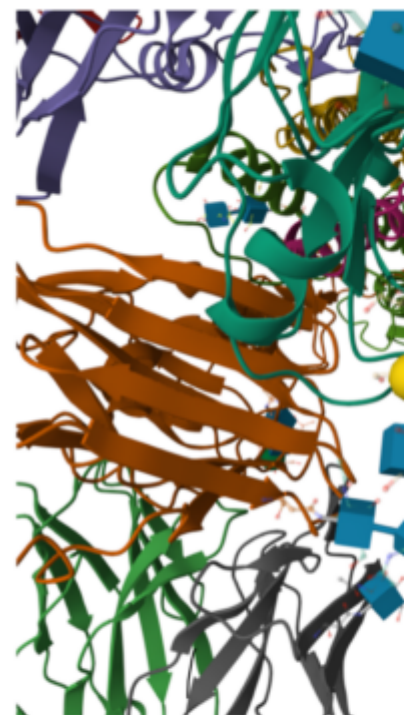
Protein-Carbohydrate Interfaces. PDB depositions: September_2024

Description

DIONYSUS is a database of protein-carbohydrate interfaces annotated according to proteins and carbohydrates' structural, chemical and functional properties . <https://www.dsimb.inserm.fr/DIONYSUS>. It collects and analyzes protein-carbohydrate complexes of various types, including non-covalent ligand binding, glycosylated proteins, glycopeptides, and reaction intermediates in sugar enzymes. The update of DIONYSUS offers the possibility of creating a regular list of the latest structures added to the PDB, including PDB ID, title, protein function, and type of carbohydrate. Listed below are the latest structures added in **September 2024**



8QLI Crystal structure of *Paradendryphiella salina* PL7C alginate lyase mutant H124 soaked with with tetra-mannuronic acid



8ZDW The cryoEM s split from symmetri

[Copie de September_PDB_Protein_CHO_Starting fileTélécharger](#)

Category

1. News